

**+VENTURE** Heated Clothing is the industry leader in tech-enabled, heated outerwear and accessories. Our heating system **Xtreme Comfort Technology (XCT)** was designed specifically for the outdoor enthusiast. With two heating source options: eco-friendly, rechargeable Lithium Battery Powered Heating System and our 12Volt Power Sports Heating System. XCT provides extreme warmth and extreme comfort allowing you to do more of what you love! Go ahead...take a few more runs down that double black diamond, or cruise a couple extra hours on your bike or ATV. Our clothes will keep you warm and comfortable in any condition.

## Comfort

NO MORE BULKY HEATED WIRES

XCT utilizes revolutionary micro-alloy heating fibers that do away with heavy, chunky coils and primitive wiring. Our heated micro-fiber infused safety panels are soft, pliable, and ultra-thin. XCT is a nearly undetectable heating system. They evenly distribute energy efficient, single sided radiant heat. This ensures the heat will stay next to the body where you need it most (rather than escaping into the atmosphere.) XCT is a source of gentle, soothing heat providing you Xtreme comfort even on the coldest winter days!



FLEXIBLE  
ULTRA-THIN



HEATING ELEMENT



ADDHEAT empowered



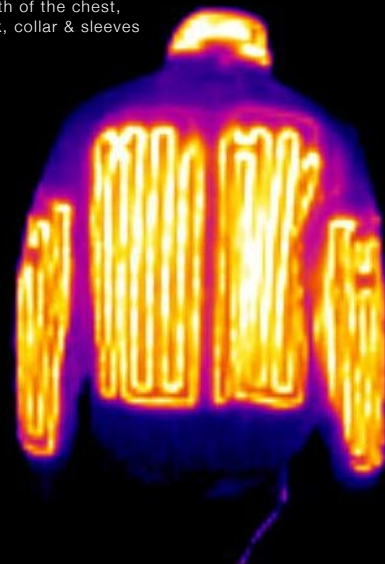
## MC-28



Create your own micro-climate while touring through the canyons in the spring, saving gas by commuting to work, touring cross country, having fun on your snowmobile or ATV in the winter. First to introduce soft, flexible, light weight, micro-fiber heating elements powered by your vehicle's battery. Offering the best performance in the industry, Period! A state of the art digital thermostat/ controller is included with each jacket and pants.

### HEATING PANELS

Located on the entire length of the chest, back, collar & sleeves



### LIGHT WEIGHT

Approximately half the weight of conventional 12V heated liners

### FLEECE COLLAR

Designed for additional comfort & warmth

MODEL	MC-28 HEATED JACKET LINER	MC-20 HEATED PANTS LINER
HEAT SYSTEM	XTC - KAPPA SYSTEM	XTC - KAPPA SYSTEM
POWER	12 -13.8VCD	12 -13.8VCD
CURRENT	6.9 ~ 7.8 AMPS (83W)	3.8 ~ 4.5 AMPS (46W)
FABRIC	WATER REPELLANT COATED NYLON	WATER REPELLANT COATED NYLON
HEATING TEMP.	135°F +/-5 @ 32°F (EST.)	135°F +/-5 @ 32°F (EST.)
TEMP. CONTROLLER	DIGITAL WITH LED	DIGITAL WITH LED
WARRANTY	LIFETIME HEATING ELEMENT	LIFETIME HEATING ELEMENT
SIZE	S, M, L, XL, 2XL	S, M, L, XL, 2XL

# 12Volt Heated Pants Liner



## HEATING PANELS

Located on legs & thighs



## ADJUSTABLE WAIST

Personalized adjustment for ultimate fit

## 3D KNEE STITCHING

Designed for comfort while riding

## NYLON SHELL

Wind resistant material combines practical & attractive styling

## MC-20



MEAS.		S	M	L	XL	2XL
JACKET LINER	CHEST SLEEVE	37" -39"	40" -42"	43" - 45"	46"-49"	50"-53"
		33.5"	35"	36"	37"	38"
PANTS LINER	WAIST	28" -30"	31" - 35"	36" -40"	41" -44"	-

**PATENT PENDING**  
LIFETIME HEATING ELEMENT WARRANTY

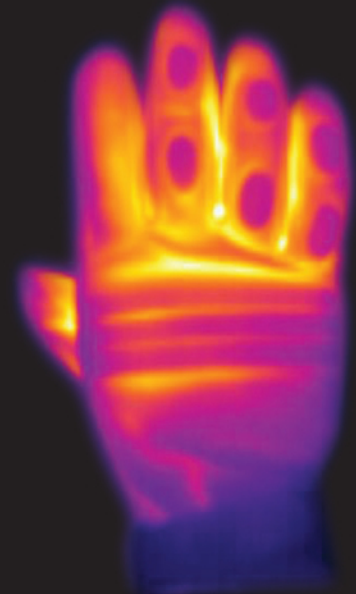


# 12Volt Powered Heated Gloves

## MC-75



**HEATING AREA**  
Stealth heater  
warms up fingers,  
palm in seconds



**GEL PADS**  
Knuckle & palm  
impact protection

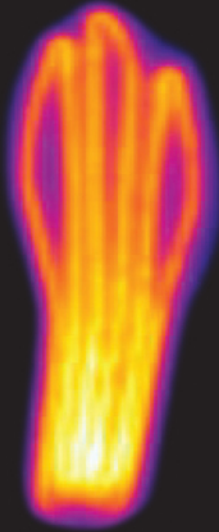
**CONTOUR CUT**  
Ergonomic design for  
effortless grip during  
extended rides

MODEL	MC-75 12 VOLT POWERED HEATED GLOVES	MC-50 12V HEATED INSOLE
<b>POWER DRAW</b>	12 -13.8VCD 1 AMP /11.9W Each (2AMP/ 23.8W Total)	12 -13.8VCD 0.72 AMP /8.6W Each (1.44AMP/ 17.2W Total)
<b>CURRENT</b>	6.9 - 7.8 AMPS (83W)	6.9 - 7.8 AMPS (83W)
<b>MATERIAL</b>	GENUINE LAMB SKIN	PU XTREME FOAM
<b>SIZE</b>	S, M, L, XL	S, M, L, XL

# 12Volt Powered Heated Insole



**FULL LENGTH HEATER**  
Heats the entire insole



Pre-wired heated liner integration

## MC-50



**PU INSOLE**  
Replaces the existing insole

**ANATOMIC CONTOUR**  
Provides optimal support, & feedback to your foot

	MEAS.	XS	S	M	L	XL
<b>HEATED GLOVES</b>	HAND	-7.5"	7.6" -8.0"	8.1" -8.5"	8.6" -9"	50"-53" 38"
<b>HEATED INSOLE</b>	Man Shoe Woman	-	5-6 7-8	7-8 9-10	9-10 11-12	11-12 13-14

**PATENT PENDING**  
LIFETIME HEATING ELEMENT WARRANTY